

LUTHERAN CHURCH OF THE CROSS



GIVE *and* **LOVE**
Like Jesus

The Journey of the



GIVE and LOVE
Like Jesus

Campaign

SPRING 2018

Vision Team assembled and led the congregation in a ministry assessment process partnering with Holy Cow Consulting!

SUMMER 2018

Vision Team receives assessment summary from Holy Cow Consulting! and begins discerning ministry initiatives for the future

SPRING 2019

Vision Team finalized ministry initiatives proposal to present to the Church Council
Property Team assembled for renovation planning
Growing Givers Group began strategizing for fall campaign
Property Team hires Zerr Berg Architects for facility planning

FALL 2019

Property Team and Zerr Berg propose facility renovation plan to Church Council
Church Council approves ministry initiatives and facility plan be presented to congregation

Council adopts ministry initiatives presented by Vision Team
Property Team reviews/ revises multiple iterations of facility plans

SUMMER 2019

Greetings in the name of Jesus!

Thank you for taking a few moments to engage your faith community. I want to take this opportunity to introduce to you the ministry and mission plans that LCC leaders have been developing over the last 18 months, and invite you to consider how your commitment to this future will make it all possible.

Our mission to Live & Love like Jesus does not allow us to rest on our laurels. The love and grace of God calls us to be a dynamic community; we are a church that eagerly and joyfully sets out to make a deep and lasting impact in one another's lives and in the lives of our neighbors. This journey of seeking how we will live into our mission all began by carefully listening. We listened to what you, members and friends of LCC, say are the most important ways the church is making an impact in your lives. We also asked what your priorities are to strengthen our ministry moving into the future. All along the way, we listened and prayed intently to discern where God's Holy Spirit is leading us.

The initiatives outlined in this brochure are the action plans developed by the Vision Team that are rooted in the current strengths of the church and the priorities we heard from you. Additionally, there are renovations proposed that have been guided by the work of the Property Team holding our current and possible future ministry in mind. While you read through these initiatives, think about how your household will be the difference maker in this story. With your gift, you can transform the plans on these pages into love and grace in the world, the same love and grace Jesus announced to his followers all those years ago. Not just saying it, but truly living and loving like Jesus is the adventure of our lives. I hope you find this future as exciting as I do!

Do you hear the call?

Can you feel that holy urge in your heart to change the world?

Will you **GIVE & LOVE LIKE JESUS** does for us?

Peace & Joy!

Pastor Joel

TOP PRIORITIES AS IDENTIFIED BY THE CONGREGATION

Create opportunities for people to form meaningful relationships.

A

Strengthen the process by which members are called and equipped for ministry and leadership.

B

Develop ministries that help heal those broken by life circumstances.

C

Adapt opportunities to make them more accessible given the pace and schedule of life.

D

The initiatives and plans below reflect the priorities outlined on the previous page. These priorities were named by the congregation as essential to our wellbeing today and in the future. Look for the connections identified by the letters A, B, C, & D that correspond to the priorities.

BELONG & SERVE

Belonging is the heart of feeling connected, knowing that you matter, are loved, and have purpose in the family of God. Belonging is how we experience God's love and grace in community. A critical step on the journey from visiting LCC as a guest to belonging is engagement and growing in faith.

With your support, we will:

- Create an intentional journey from guest to member to belonging to servant leader **A B**
- Facilitate opportunities for deeper relationships among the LCC Family **A C**
- Create a culture of radical welcome for visitors and guests **A B**
- Announce God's love & grace in the wider community through invitation and welcome **A C**

To help fulfill these plans, we will create a staff position for the Ministry of Hospitality & Engagement, train and equip current members to serve as the "proclaimers (angels!) of God's love and grace," and transform the Cross Way Center into a hub for welcome, gathering, relationship building, and "active worship."

WORSHIP BEAUTY

Worshipping the One who creates, redeems, and sustains us is the central act of Christian community. Worship is where God claims our lives, comforts our broken hearts, challenges us to live as advocates for justice and peace, and transforms us to live and love like Jesus in the world. There is no activity at LCC that is more important than worship.

With your support, we will:

- Build and sustain the worship team **A B D**
- Enhance the visual beauty of the Sanctuary **B**
- Finish modernizing audio and visual equipment
- Launch the presence of worship on LCC's digital channels **A D**
- Recruit and launch more child and teen leaders in all aspects of worship **A B D**

Highlights of enhancing the visual beauty of the Sanctuary include a total restoration of our 100+ year-old stained glass windows, replace cracking tile floor, baptismal font, other altar pieces, and add seasonal lighting and other accoutrements.

CARE FOR THE LCC HOME

The LCC facility is an incredible resource that makes possible nearly 100% of our activities as a church. Caring for the long-term wellbeing of the facility and grounds, increasing its energy efficiencies, and transforming portions of the current space into more flexible space is a critical component to the future of Lutheran Church of the Cross.

With your support, we will:

- Replace failing HVAC systems with new, high-efficiency natural gas equipment
- Renovate the Fellowship Hall changing it from a large, hollow, dark room into an area that reflects the décor of the rest of the facility and the joy of the LCC family **A B C D**
- Add additional and flexible meeting room space in Fellowship Hall **A B**
- Install mass safety notification and sprinkler system throughout the facility
- Create a central and primary entrance and drop-off location to the facility for all activities
- Create a visible and controlled-access entrance to the administrative offices
- Complete much-needed parking lot and grounds maintenance
- Create a part-time position for facility and grounds management **A C**

Accomplishing these plans will allow us to fully utilize the space we acquired years ago, opening up more opportunities for new outside partners to use the LCC facility. A single main entrance for ministry activities and a controlled-access administrative entrance will greatly increase the safety and security of our community. It will also contribute to a culture of welcome and hospitality where guests are not guessing how to enter the building and where to go once inside. A part-time facility and grounds manager will greatly free up the Lead Pastor to do the pastor-work you call and expect your Lead Pastor to do.

LOVE OUR NEIGHBORS

A church is not a church if it is not actively serving and leading its neighbors and community. LCC is only just beginning to dream how God will transform the lives of families locally at the Grace Garden (YWCA Supported Residence) and globally at Lantern Hill (LCC's global mission partner in Baja, Mexico). In addition to these primary mission partners, there are many opportunities where God would have the faith community lead in the public arena in the areas of creating greater justice, compassion, civility, and peace.

With your support, we will:

- Launch a “west-metro” emergency food bank partnering with the YWCA by repurposing our garage into a mini-grocery store **A B C D**
- Discern essential supports unique to the faith community for residents of the Grace Garden **A B C**
- Offer grants for LCC members and friends to share their gifts in service to the mission at Lantern Hill **A B C D**
- Provide ongoing support for staff on the ground at Lantern Hill **C**
- Commit more space, leadership, and other resources for senior citizens in the community **A B C**
- Create and implement a strategy to organize and lead in West Fargo in the area of justice, compassion, civility, and peace **B C**

The greatest resource for fulfilling our mission is you! This is why the ministry of the congregation is at the forefront of the Give & Love like Jesus Campaign. In second place is the wonderful facility with which we have been entrusted. As we all know, facility renovations come with a demand on the treasure we share for God's work. The most significant financial component of the Campaign is dedicated to the LCC home.

The renovation plans can be described and prioritized by the following:

CRITICAL:

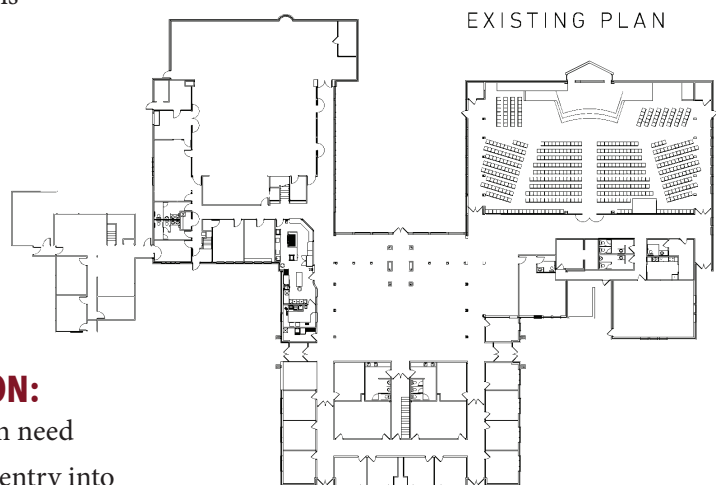
- mechanical, electrical, and fire-safety systems

IMMEDIATE MINISTRY IMPACT:

- reconfiguring the fellowship hall
- updating classrooms for larger groups and current and future ministry partners
- transform the Cross Way Center creating a "statement piece" of welcome and hospitality for members and guests, and providing an area for "active worship"

PREPARING FOR TOMORROW'S MISSION:

- repurpose garage into food bank for those in need
- defining the main entry and administrative entry into the church building thereby significantly increasing the safety and security of the people inside

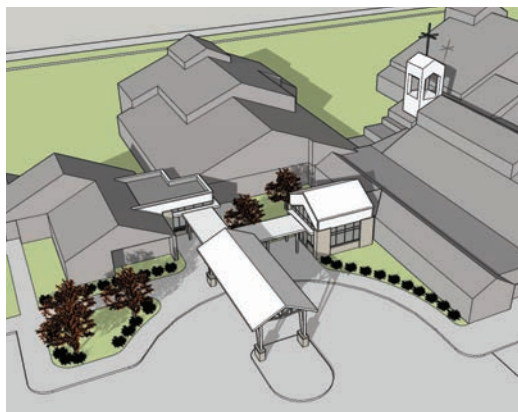


An additional design concept would add a drive-through, drop-off canopy and covered walkways. These would provide safety and protection from the elements; particularly helpful for members and guests with mobility challenges. The canopy and walkways would also further define where to enter the building.



SECURE ENTRANCES

MAIN POINT OF ENTRY FOR THE CHURCH; ENTRANCE FOR THE OFFICE, THAT IS IMMEDIATELY GREETED BY RECEPTION.



CANOPY ALTERNATE

COVERED WALKWAY AND DROP OFF POINT. GIVING A MORE GRAND ENTRANCE TO THE CHURCH.



BY THE NUMBERS

FACILITY	\$1,610,528
Interior Renovations & Mechanical Systems:	\$911,500
Main Entrance Vestibule:	\$166,700
Administrative Entrance Vestibule:	\$125,750
Canopy & Covered Walkways:	\$110,000
Sitework & Parking Lot Maintenance:	\$100,000
Cross Way Center Roof Maintenance:	\$20,000
Contingency, Architectural & Engineering:	\$176,578
SANCTUARY	\$41,280
STAFFING	\$157,816
MISSION PARTNERS	\$90,481
GIVE & LOVE LIKE JESUS CAMPAIGN TOTAL	\$1,900,105

NEXT STEPS

STEP ONE

Review the information in this campaign booklet. Have conversation with others in your family visiting about what excites you for the future at LCC.

STEP TWO

Pray. Give thanks to God for blessing us with a thriving and dynamic faith community. Ask that God's Holy Spirit create in us all generous hearts for the mission of Christ's church.

STEP THREE

Determine a gift amount for this three-year campaign: 2020-2022. Remember, you can give far more than you think by giving over a period of time.

STEP FOUR

Complete the pledge card included in this packet and return it to church on or before December 1, 2019.



Lutheran Church of the Cross
1402 16th St. East
West Fargo, ND 58078

